



SCHOOL LEAVER PROSPECTUS

26|27

#ICanBe



Tameside
College



Contents

THE COLLEGE

- 03 A message from the Principal
- 04 Vision Tameside
- 06 Ofsted rated Good
- 07 Travel and transport
- 08 Programme of study
- 10 Choosing your level and entry requirements
- 11 Alumni
- 12 T Levels
- 14 How to apply
- 15 Dates for your diary
- 16 Student hub
- 18 University courses at Tameside College
- 19 Join our award winning students

COURSE DIRECTORY

- 20 APPRENTICESHIPS
- 26 ANIMAL MANAGEMENT AND FLORISTRY
- 30 AUTOMOTIVE
- 34 BUSINESS AND FINANCE
- 38 COMPUTING
- 42 CONSTRUCTION
- 48 ENGINEERING
- 52 FOOD STUDIES AND BAKERY
- 56 HAIR AND BEAUTY
- 60 HEALTH, SOCIAL CARE AND EARLY YEARS EDUCATION
- 66 PUBLIC SERVICES
- 70 SPORT
- 74 TRAVEL AND TOURISM
- 78 SUPPORTED INTERNSHIP
- 79 ASPIRATIONS
- 80 SPRINGBOARD
- 83 ESOL

Welcome

WELCOME FROM THE PRINCIPAL

Welcome to Tameside College.

With the college providing the next steps from school to university, employment and apprenticeships, we aim to support the individual aspirations of every learner who chooses to study at Tameside College.

Our courses match the growing needs of employers across different employment growth sectors in Greater Manchester. This includes preparing you for life as a university student, if this is part of your career path. An essential part of students' development includes experience with employers in the workplace and at the college. This means that our students enter the labour market with the correct mix of skills and qualifications required to succeed. For example, our T Level health course would enable you to undertake a significant period of work experience with Tameside & Glossop NHS Trust. We work in partnership with GM Chamber of Commerce and many local and national employers to ensure our courses meet employers' needs.

Tameside College has invested significantly (£200 million +) in its campuses to develop the best learning facilities amongst further education colleges in the north west. The new animal management centre, an expanded brickwork facility and automotive centre including EV & hybrid technologies are our latest new buildings. Additionally, our support hub provides a 'one stop shop' for pastoral, financial and learning support. There are greatly enhanced facilities for fabrication and welding. There has also been a significant multimillion pound updating of other parts of the campus.

The Advanced Technologies Centre, for science, technology, engineering and maths subjects, has seen a further £1 million + invested into mechatronics, robotics and industry 4.0 specialist equipment as a result of the college being a key partner in the GM Institute of Technology (GMIoT) with the University of Salford. At Tameside One our new facilities for the service industries and digital & creative sectors are outstanding. The state-of-the-art construction centre opened in 2021, and we have ambitious plans for our remaining estate which will see an ability to offer more places for school leavers.

Our innovative teaching and learning is complemented by comprehensive support and enrichment activities. Ofsted inspectors recognise the achievements staff and students have made on our journey to outstanding. We are particularly proud of the mutual respect between students and staff and the welcoming and friendly culture, and the community feel in the college. We look forward to meeting you and finding out more about your ambitions. At every stage of your application, we will make sure you receive the best care, as you begin life as a Tameside College student in September 2026.

Our mission is to transform lives through education and training, come and be a part of it!



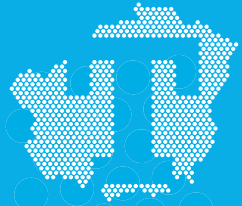
#ICanBe

JACKIE MOORES
Principal

Advanced Technologies Centre

September 2016

Engineering, Manufacturing and Design Technology



Tameside One Skills Centre

March 2018

Bakery, Food and Hospitality, Hair and Beauty, Business, Computing, Travel and Tourism, Digital, Graphics and Animation

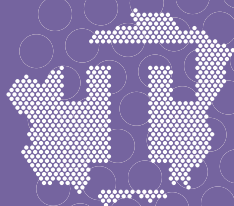
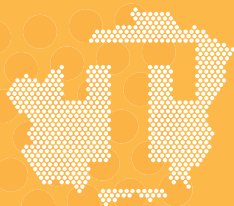


VIS

Construction Skills Centre

December 2021

Plumbing, Carpentry and Joinery,
Brickwork, Painting and Decorating and
Electrical



Automotive Skills Centre



Beaufort Road

September 2024

Animal Management, Automotive, Sport,
Uniformed Public Services, Health and
Social Care, Early Years and Land Based
Studies

N



Animal Management

Tameside College is rated Good by Ofsted



Rated Outstanding for Personal development



Tameside
College

Comments about Young Learners and Apprentices

Students and apprentices benefit from a highly effective personal development programme that develops their employability skills, confidence and resilience.

Students benefit from studying in a calm and respectful environment where teachers have high expectations. Students are motivated to achieve and display positive attitudes and professional behaviours.

Apprentices use their newly acquired knowledge and skills to contribute positively to their businesses and the wider college community.

The majority of apprentices continue in employment, gain promotion or gain additional responsibilities at work.

Students with high needs enjoy coming to the college. They appreciate the greater responsibility that they have developed, compared with school, and feel proud of what they have achieved.

Staff skilfully work with employers to develop tailored training and education programmes. They use the expertise of employers and key stakeholders to inform and endorse their curriculums and provide students and apprentices with the future skills they require.

Students and apprentices benefit from unbiased, well-planned careers education, information, advice and guidance. They attend industry specific careers fairs, careers talks and events where guest speakers explain their career journey

Students and apprentices speak positively about the student hub where they feel comfortable to talk to members of staff and seek support.



Tameside
College



www.tameside.ac.uk

Travel and Transport

LOCATED CLOSE TO ASHTON TOWN CENTRE'S TRANSPORT HUB, TAMESIDE COLLEGE IS ACCESSIBLE FROM VARIOUS LOCATIONS ACROSS MANCHESTER.



By bus:

Ashton Interchange has numerous services that run frequently. Many of the routes have buses running every 15 minutes. Our Tameside One campus is in the centre of Ashton-under-Lyne and our Beaufort Road campus is just a ten minute walk away.

**Free bus travel for 16-18s with "Our Pass"*



By train:

Trains run frequently between Ashton-under-Lyne and Manchester, with the journey taking around 15 minutes.



By tram:

Trams run every 12 minutes from Manchester to Ashton. The direct line from MediaCity, passing through Piccadilly, takes around 40 minutes.



Cycling:

There are a number of secure cycle spaces at the college campus.



Car park:

There are a number of car parking spaces on the college campus.

Programme of Study



When you start college, we will create a study programme specifically designed towards supporting you and your individual learning needs. From helping you choose the right course, to getting the right support via mathematics and English classes, Tameside College are here to help you.

YOUR CHOSEN COURSE

Choosing a course can be overwhelming after studying different subjects at GCSE. We'll give you the support you need to find out what you enjoy, what existing skills you have and what career paths interest you.

SELF-STUDY

Self-study plays an important role in your college life, as you are expected to manage your workload outside of the classroom in order to develop your own learning and independence.

INDUSTRY PLACEMENT AND EMPLOYABILITY SKILLS

Gaining work experience whilst studying is essential to learning employability skills such as communication, teamwork, and problem solving that will help with the transition from college into the working world.

ENRICHMENT

There's more to college life than studying. Make the most of your time by learning new skills and making new friends via our range of enrichment activities such as sports, and volunteering.

TUTORIALS

As part of your study programme, you will be assigned a progress tutor who will make sure you stay on the right track whilst studying and help you settle into college. Your progress will be reviewed, making sure you are achieving your full potential.

MATHEMATICS AND ENGLISH

A basic knowledge of both mathematics and English is essential for success in any career, especially progression to university. Full-time students are required to study English and mathematics alongside their programme if they haven't achieved a grade 4 at GCSE or functional skills level 2.

Award Winning Students



GM Colleges Competitions

Hospitality 1st, 2nd & 3rd place

P&D Apprentice

Sophie Lownds, painting and
decorating apprentice
2nd place



Supported Internship

Celebration of achievement

Maths Education Innovation Competition

North West regional finals
3rd place



Choosing Your Level and Entry Requirements



To support you in making the best choice for your individual needs we provide various levels of qualification at Tameside College, which means there is a level for everyone. To ensure that our students are successful in their studies, we require them to meet our entry requirements, however, you may hold other qualifications which may be useful to determine the level of course that is best suited to you.

GCSE

G

- GCSEs are well known qualifications, which at college are taken over 1 year.
- GCSEs can be taken alongside any of our courses.
- Maths and English GCSEs are a requirement for university and employment.

Students who gain a grade 3 in maths and English are expected to resit as part of their study programme.

FOUNDATION LEVEL

F

- Foundation level is for those who do not hold any formal qualifications prior to starting at college.
- They help students develop personal and social skills whilst studying mathematics and English.

No formal entry requirements however we expect all learners to demonstrate a willingness to learn and to demonstrate behaviours and attitudes which support their progression and success.

LEVEL ONE

L1

- Level 1 qualifications provide a starting point for progression to higher level vocational routes.
- Courses run for 1 year and allow progression onto level 2 qualifications.

3 GCSEs at grade 1.

LEVEL TWO

L2

- Level 2 qualifications provide a good foundation for students wishing to follow a particular vocational route.
- Courses run for 1 year and allow progression onto level 3 qualifications.
- Students are assessed by assignment and practical skills.

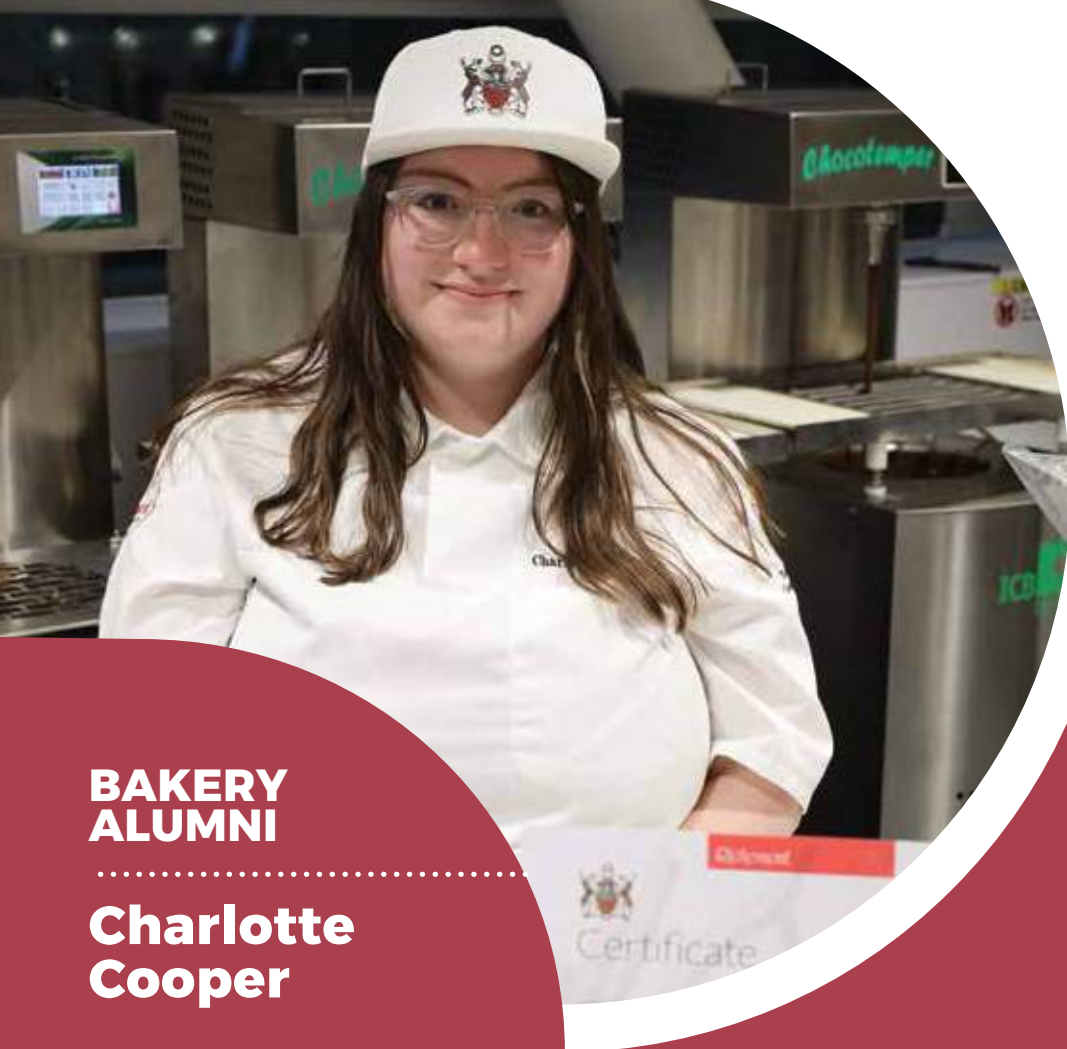
4 GCSEs at grade 3 or a vocational qualification Level 1 in the chosen subject.

LEVEL THREE

L3

- Level 3 qualifications provide routes for students wanting to progress onto higher education or employment.
- Level 3 courses vary between 1 and 2 years and are equivalent to 3 A levels.

4 GCSEs at grade 4 including maths and / or English or a vocational qualification Level 2 in the chosen subject.



BAKERY ALUMNI

.....
**Charlotte
Cooper**

CALDER HIGH SCHOOL

“

I started my journey at Tameside College as an apprentice baker, now my aim is to become a manager in the bakery industry.

”

PROGRESSION

**Concept Technologist
Park Cakes Bakeries**

#ICanBe



**Tameside
College**



www.tameside.ac.uk
0161 908 6789



T-LEVELS

THE NEXT LEVEL QUALIFICATION

T LEVELS

T Levels follow GCSEs and are equivalent to 3 A levels. These 2-year courses have been developed in collaboration with employers and businesses so that the content meets the needs of industry and prepares students for work, further training or study.

T Levels offer students a mixture of classroom learning and 'on-the-job' experience during an industry placement (approximately 45 days).

ENTRY REQUIREMENTS

4 GCSEs at grade 4 or above, including Maths and English, at grade 4

PROGRESSION

University
Employment
Apprenticeship

KEY FEATURES OF T LEVELS

Equivalent to 3 A levels

45 day industry placement

80% classroom/workshop &
20% industry placement

2 year study

Assessed by examination, practical work
(employer set projects)

At the time of printing a number of T Levels are planned to run, however, this may change. For the most up to date information please see the college website.

T-LEVELS

THE NEXT LEVEL QUALIFICATION

Name:

Milli Curtis-Bailey

Previous school:

Copley Academy

Studied:

T Level Health

Destination:

**Paramedic science at
University of Central
Lancashire**

Grades achieved:

Distinction



“

*The **T Level** has been really enjoyable, my teachers have been amazing.*

”

How to Apply

APPLY TO THE COLLEGE VIA OUR ONLINE APPLICATION FORM:

www.tameside.ac.uk



September 2025

You can apply to Tameside College for the academic year 26/27. The earlier you complete an application form, the more likely it is you will secure an interview and place for your chosen course.

February 2026

You should aim to have your completed application form returned to the College by this date at the latest. Ask your school careers advisor for support in completing the form, if you require it.

APPLICATION PROCESS

- 1** Submit completed application form
- 2** You will receive an acknowledgement text from the College
- 3** You will be invited into college for an informal interview or be interviewed via telephone
- 4** Attend your allocated interview date and time, either in college or over the telephone
- 5** You will be offered a conditional place at the College
- 6** You will be informed of college news and events throughout the year
- 7** Applicants who have been offered a place will be invited in to enrol in August 2026

Dates For Your Diary



Tameside
College



Open Events

Monday
29th September 2025
5pm - 8pm

Saturday
11th October 2025
10am - 2pm

Monday
17th November 2025
5pm - 8pm

Monday
20th April 2026
5pm - 8pm

Book your appointment.

Interview Dates

Monday
10th November 2025
8th December 2025
12th January 2026
2nd March 2026
11th May 2026
8th June 2026

Keep up to date with key dates via our
social media channels and website:

www.tameside.ac.uk



www.tameside.ac.uk



Student Hub.



Learning Support

Learning Support

Our Learning Support facilitators provide help you might need to succeed on your course and develop your skills for the future. We offer a range of support to meet your needs if you have a difficulty, disability or medical condition.

If you have specific disabilities/difficulties like: Dyslexia, Dyspraxia, Autism, hearing/visual/ physical difficulties, ADHD or medical conditions our team will support you to make sure you are successful on your course and in every aspect of college life.



Wellbeing

Wellbeing

Our team are here to support you with any personal issues which might affect your time at college. Whether they are big or small sometimes we all face problems.

If you have problems at home or in college, or are feeling stressed or under pressure, our team are always here to listen and help you manage these situations. They will also help you with any situation where you don't feel safe.

Financial Support

We are a great starting point if you need some help or support but aren't sure who to ask. We can help you find the information you need and the financial support you may require with costs relating to your college journey – things like meals and travel.



**Enquiries
& Financial Support**

Progress Tutors



Progress Tutors.

Our Progress Tutors provide you with support and guidance on a range of subjects through our tutorial programme.

They will review your progress and keep you on track with your course.

They will also help you reach your potential and support you with your choices for the future.



Work Experience & Enrichment

Employability, Industry Placement and Enrichment

Start building your career and enhance your employability skills with industry work placements and employability activities, such as guest speakers, mock interviews and employer workshops. The Employability Team will support and guide you to be work ready, building the skills needed for a successful career and future workforce. From taking part in an industry work placement to volunteering and actively contributing to your local community or being a member of a college sports team, there are lots of ways to widen your college experience.

Careers and Progression

Our team of qualified Careers Advisers are here to offer impartial, high-quality information, advice and guidance to help you make informed choices about your future.

We can support you with choosing the right course or pathway; progressing onto your next step, whether that's further study or training, exploring apprenticeships and job opportunities; building your professional profile, whether that's improving your CV or applying to university through UCAS.

Whether you have a clear idea of your future or are still exploring your options, we're here to support you every step of the way.



Careers.

University courses at Tameside College



Many students progress to university after college. Do you want to stay local and still study a degree or higher education qualification? Alternatively you can choose to study in a wide range of universities in the UK or worldwide.

Tameside College offers the following Higher Education courses:

- HTQ in Computing - Cyber Security or general computing pathways available
- HTQ in Mechanical Engineering (Certificate and Diploma)
- HTQ in Electrical Engineering (Certificate and Diploma)
- BSc in Psychology and Criminology (The Open University)
- BA (Hons) in Education -Supporting Teaching and Learning (University of Huddersfield)
- Professional Graduate Certificate in Education (University of Huddersfield)
- Post Graduate Certificate in Education (University of Huddersfield)
- Certificate in Education (University of Huddersfield)
- Post Graduate Diploma on Education (University of Huddersfield)

GREATER MANCHESTER

I	N	S	T	I	T	U	T	E	O	F
T	E	C	H	N	O	L	O	G	Y	



Careers.

You can apply to your chosen university, or to Tameside College for one of the above courses, via www.ucas.co.uk/apply (fees apply). Alternatively, Tameside College also offer direct applications via our website <https://he.tameside.ac.uk/>

If you need support in completing an application, then please visit the college's careers advisers who will be able to assist you.

You can also progress into employment in the relevant fields; see course details for progression routes for particular courses.

We also offer a range of Access to Higher Education courses such as Nursing/ Midwifery, Social Science, Teaching, Science/Allied Medical Professions and Computing. Access to HE courses help prepare people for study at university.



Join Our Award Winning Students



**Dulshia
Winslet Durai**

*Maths Student
of the year*



**Aisha
Bakare**

*Bakery Student
of the year*



Jake Cox

*Industry
Placement
Student of the
year*



**Matthew
Howard**

*Painting and
Decorating Student
of the year*



Luke Horby

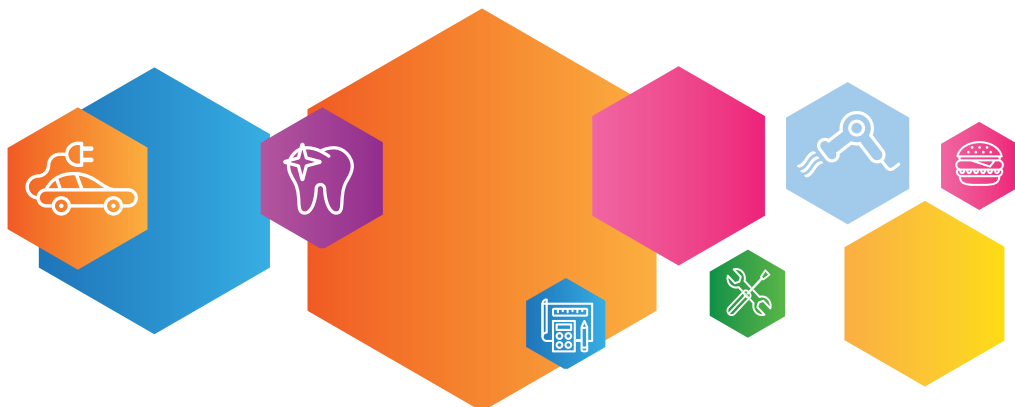
*Electrical Student
of the year*





What is an Apprenticeship?

An Apprenticeship provides you with the opportunity to earn whilst you learn. You will work towards a nationally recognised qualification.



Apprenticeships combine ‘on the job’ practical training whilst studying towards a qualification, all of them require off the job training, where you attend college classes and workshops.

You will be employed by an employer who will provide you with the opportunity to put into practice what you are learning at college.

You will be assigned an assessor from Tameside College to support you throughout your apprenticeship. They will visit you at your place of work and will guide you towards completing your qualification.

GO
APPRENTICESHIP





Tilly Ryan

ST PHILIP HOWARD



PROGRESSION

Self employed
in a salon

**"I enjoyed
learning new
skills which
have helped
me build my
career."**

How to Apply



I am still in school

Show your interest in an Apprenticeship by completing the college application form.

Online www.tameside.ac.uk

What happens after I have applied?

After completing an application form our admissions team will process this. Your application will be sent to our apprenticeship team who will be in touch.

What happens if I don't have an employer lined up?

We will contact you about suitable vacancies. Our team will also process an application on your behalf for a full time college course which relates to your chosen apprenticeship. By August, if you haven't secured an employer who will support your Apprenticeship, you can enrol on the full time course until an employer is found.

I have started a full time college course but now have an employer?

If you have started a full time course with the college but in the meantime have secured an employer, let us know on 0161 908 6608 and we will arrange for you to carry out the Apprenticeship programme instead. We will need to confirm with the employer before processing your transfer.

I already have an employer lined up

Please apply for the apprenticeship online and inform us of the employer. We will contact them to ensure they meet the criteria to support an Apprentice.

I have already left school

Apply for an apprenticeship via our website
www.tameside.ac.uk

Our Apprenticeship team will get in touch with you and invite you to an interview to ensure you meet the required specifications for the apprenticeship.





Apprenticeship Standard Programmes



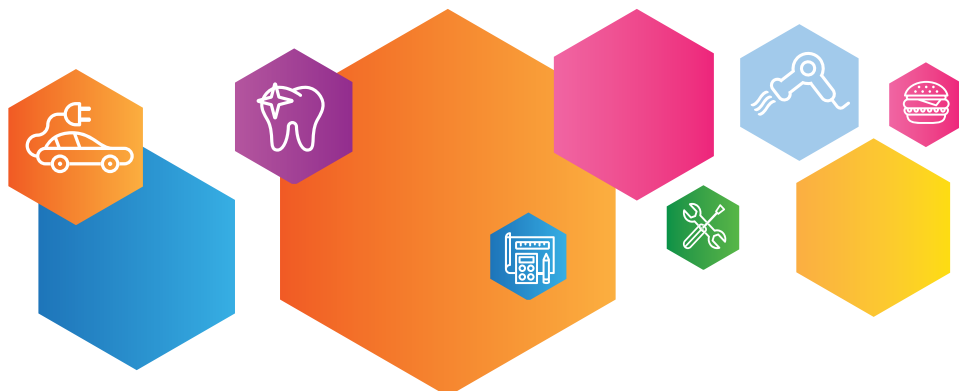
COURSE	LEVEL	COURSE	LEVEL
AUTOMOTIVE		CONSTRUCTION	
Motor Vehicle Service and Maintenance Technician (Light Vehicle)	Level 3	Painter and Decorator	Level 2
Autocare Technician	Level 2	Bricklayer	Level 2
Vehicle Damage Panel Technician	Level 3	Craft Bricklayer	Level 3
Vehicle Damage Paint Technician	Level 3	Carpentry and Joinery	Level 2
CUSTOMER SERVICE AND BUSINESS		Furniture Making Operative	Level 2
Customer Service	Level 2	Craft Carpentry and Joinery	Level 3
Business Administrator	Level 3	Electrotechnical (Installation / Maintenance Electrician)	Level 3
Customer Service Specialist	Level 3	Craft Painter and Decorator	Level 3
		Plumbing and Domestic Heating Technician	Level 3



Apprenticeship Standard Programmes



COURSE	LEVEL	COURSE	LEVEL
ENGINEERING		FOOD & HOSPITALITY	
Engineering Technician	Level 3	Commis Chef	Level 2
Machining Technician	Level 3	Hospitality Team Member	Level 2
Maintenance & Operations Engineering Technician	Level 3	Production Chef	Level 2
Metal Fabricator	Level 3	Food and Drink Process Operator	Level 2
Plate Welder	Level 3	Baker	Level 2
Engineering Manufacturing Technician	Level 4	Cef de Partie	Level 3



Apprenticeship Standard Programmes



COURSE

LEVEL

HAIR AND BEAUTY

Advanced and Creative Hair Professional

Level
3

Hair Professional

Level
2

Barbering Professional

Level
2



COURSE

LEVEL

HEALTH AND EARLY YEARS

Healthcare Support Worker

Level
2

Senior Healthcare Support Worker

Level
3

Adult Care Worker

Level
2

Dental Nurse

Level
3

Early Years Educator

Level
3

Early Years Practitioner

Level
2

Lead Adult Care Worker

Level
3

Teaching Assistant

Level
3

Playworker

Level
2

GO
APPRENTICESHIP



ANIMAL MANAGEMENT INDUSTRY



FACTS

36
million

Animals are
owned as pets

Progression | Salary

3
years

University Degree
BSc Veterinary
Nursing

13.5
million

Dogs are pets,
the highest
owned pet

2 years

Apprenticeship
Zookeeper and
Wildlife Ranger

40%

Decline in bird
population

£30k

Employment
Animal
Behaviourist

8%

Growth for the
animal care
sector in the
next 5 years

#ICanBe

Animal Behaviourist
Animal Welfare Officer
Zookeeper
Veterinary Nurse



Tameside
College

A portrait of a young woman with long dark hair, wearing a black patterned top, against a backdrop featuring logos for Tameside College and Ofsted.

**STUDENT
OF THE
YEAR**

**ANIMAL
MANAGEMENT**

.....

**Isabelle
Sullivan-
Appleton**

MILLOM SCHOOL

“

My teachers have all been very inclusive,
supportive and knowledgeable.

”

PROGRESSION

Biology at
Salford University

#ICanBe



Tameside
College



www.tameside.ac.uk
0161 908 6789



Animal Management and Floristry Courses

FOR ENTRY QUALIFICATIONS SEE PAGE 10

ANIMAL MANAGEMENT



Duration ● 1 year | **Campus** ● Beaufort Road

These courses are designed for anyone wanting to pursue a career in animal management, science or veterinary nursing. You will develop your knowledge in all aspects of animal management including animal health and welfare, animal science and gain hands-on practical skills. You will study a range of animal-related topics such as: animal biology, animal feeding and nutrition, animal behaviour and communication, wildlife rehabilitation and conservation, animal breeding and genetics.

FLORISTRY



Duration ● 1 year | **Campus** ● Beaufort Road

This course in floristry will be ideal for those who have a creative flair and want to progress to a career as a florist. During the course you will learn designs such as tied, funeral and wedding arrangements. You will be given an introduction to art and design for florists, gain an insight into botanical names of flowers and plants as well as checking and maintaining the condition of plants and planted designs. You will also learn how to display floristry goods and how to decorate a function using floral displays.

VETERINARY CARE ASSISTANT



Duration ● 1 year | **Campus** ● Beaufort Road

If you love working with animals and want to turn your passion into a career, the level 2 veterinary care assistant course is the perfect place to start. This course combines classroom learning with practical skills, giving you the knowledge and experience needed to care for animals in a professional setting. You'll develop the confidence to support veterinary teams, handle animals safely, and assist with their everyday health and wellbeing. Completing this qualification can open doors to further study, apprenticeships, or direct employment in animal care, making it a fantastic first step towards a rewarding career helping animals and the people who care for them.

Animal Management and Floristry Courses

FOR ENTRY QUALIFICATIONS SEE PAGE 10

T LEVEL: ANIMAL MANAGEMENT

Duration • 2 years | Campus • Beaufort Road

This two year animal management T Level is designed to give you the skills and knowledge you need to enter a career in the animal care sector, such as veterinary nursing, zookeeping, or animal welfare. In addition to the core content, each student will also complete at least one specialism; animal management and behaviour or animal management and science, plus a 45 day work placement.

FACTS

AUTOMOTIVE INDUSTRY



**£8.2
billion**

Is contributed to
the GM economy
annually

Progression | Salary

**3
years**

University Degree
Vehicle
Technology

115,000

People employed
in the Automotive
sector

**3
years**

Apprenticeship
Autocare
Technician

71%

Of employers
prioritise
electric/hybrid
vehicle training

£38k

Employment
Vehicle Paint
Technician

16%

Increase in
apprenticeships in
the Automotive
sector in 2025

#ICanBe

Vehicle Technician
MOT Tester
Paint Technician
Servicing Engineer



Tameside
College

**STUDENT
OF THE
YEAR**

AUTOMOTIVE

**Angel
Summers**



LONGDENDALE HIGH SCHOOL

“

The effort and the dedication that teachers put into lesson planning, teaching and the support they give is amazing.

”

PROGRESSION

**Apprenticeship in
Automotive Repair**

#ICanBe



**Tameside
College**



www.tameside.ac.uk
0161 908 6789



Automotive Courses

FOR ENTRY QUALIFICATIONS SEE PAGE 10

VEHICLE ACCIDENT REPAIRER (BODY OR PAINT)

L1

Duration • 1 year | Campus • Beaufort Road

This course is aimed at students seeking employment as a repair technician within the automotive accident repair sector. You will develop a wide range of skills from learning how to fix crash damaged cars, to repairing the smallest dent. This course will cover a range of projects including: repairing vehicle body panels, welding, fitting new vehicle body panels, also covering the welding and fabrication of vehicle bodies.

Learning with us will be a combination of theory based and practical work. Additional units include basic vehicle electrics, removing and refitting trim components and functional skills.

VEHICLE MAINTENANCE (MECHANICAL)

L1

Duration • 1 year | Campus • Beaufort Road

This course is aimed at students with a keen interest in the maintenance and repair of vehicles that would like to gain employment as a vehicle technician within the automotive maintenance and repair industry.

Working on a range of vehicle rigs and cars you will learn how an engine works, how to perform a vehicle inspection, as well as learning a range of automotive foundation skills. You will learn about a vehicle's brakes, wheels and tyres, exhaust, petrol engines and basic electrical systems. You will gain an understanding of why different components and systems are used on various cars and much more. Hybrid technologies are included.

VEHICLE ACCIDENT REPAIR (PAINT OR BODY)

L2

Duration • 1 year | Campus • Beaufort Road

During this course you will gain the knowledge and skills of the automotive environment. You will use tools and equipment that is frequently used in vehicle refinishing, as well as learning how to applying fillers and foundation materials, refinishing plastic materials and components, preparing metal and pre-painted surfaces and repairing minor paint defects. You will finish the course with a good understanding of the health and safety aspects of working in an automotive setting and be equipped with the skills to progress in the Automotive industry.

Automotive Courses

FOR ENTRY QUALIFICATIONS SEE PAGE 10

LIGHT VEHICLE SERVICE AND MAINTENANCE TECHNICIANS

L2

Duration • 1 year | Campus • Beaufort Road

A light vehicle technician has the skills and knowledge to inspect, service and repair light vehicles. Students will gain an understanding of the skills and knowledge that are important when working as a light vehicle technician. You will learn customer service, sales principles, communication; stock control procedures; light vehicle chassis systems; service, maintenance and inspection; vehicle propulsion, internal combustion engine; vehicle propulsion, alternative fuel systems and electrical systems and components.

LIGHT VEHICLE MAINTENANCE AND REPAIR PRINCIPLES

L3

Duration • 1 year | Campus • Beaufort Road

This qualification is ideal for anyone looking to be a qualified motor vehicle technician or MOT inspector and is well recognised within the automotive industry. You will also gain a wide range of knowledge and understanding of health and safety in the workplace, safe use of major workshop equipment and interpretation of data, fault codes and relevant diagnostic procedures relating to the major systems on the vehicle.

During the level 3 qualification you will learn to meet the technical and diagnostic needs for today's motor vehicle repair industry, including the diagnosis and rectification of faults within advanced complex systems. The course provides the essential knowledge to be a competent service technician working on light vehicles, including small commercials in all types of garages, dealerships and maintenance depots. Hybrid technologies are included.

BUSINESS AND FINANCE INDUSTRY



FACTS

3rd

**Fastest growing
economy in the
UK is Manchester**

Progression | Salary

**3
years**

**University Degree
Business, Finance
and Economics**

280,000

**People employed
in financial,
professional and
business services
in Manchester**

**18
months**

**Apprenticeship
Business
Administrator**

7,000

**Of graduates
from Manchester
have stayed
locally for work**

£28k

**Employment
Marketing
Executive**

1.8%

**Per year
job growth**

#ICanBe

**Entrepreneur
Marketing Co-ordinator
Business Administrator
Accountant**



**Tameside
College**

sted
ider

#ICa

Tameside
College

Ofsted

STUDENT
OF THE
YEAR

BUSINESS

Joseph
Pattison

GLOSSOPDALE SCHOOL

“ I love the friendly and supportive atmosphere around the college. ”

PROGRESSION | Business Management at Sheffield Hallam University

#ICanBe



Tameside
College



www.tameside.ac.uk
0161 908 6789

Ofsted
Good
Provider

Business and Finance Courses

FOR ENTRY QUALIFICATIONS SEE PAGE 10

BUSINESS AND FINANCE

Duration • 1 year | Campus • Tameside One



Get started in the world of business with hands-on projects that build your confidence and teach you real skills in branding, budgeting, accounting and customer service. You'll explore how businesses grow, promote themselves and manage money, while solving real challenges and working on creative campaigns. Whether you're starting out or ready to go further, you will build and develop your business and finance skills from level 1 to level 2. The course sets you up with the skills Greater Manchester employers want most, like digital know-how, communication and problem solving.

BUSINESS AND FINANCE

Duration • 2 years | Campus • Tameside One



Dream of launching your own brand, leading a marketing team or making smart moves in finance? This course gives you the skills to make it happen. You'll dive into the exciting world of project management, sales, social media, digital marketing and business strategy whilst working on live briefs with real employers. Learn how to build campaigns, manage budget, lead teams and make data-driven decisions. With a focus on creative, leadership and digital know-how, you'll be ready for university, and apprenticeship or a fast-track career in one of Greater Manchester's most in-demand industries.





FACTS

COMPUTING INDUSTRY



86,000

People employed
in the digital and
tech sector

Progression | Salary

**3
years**

University Degree
Computer
Science

80%

Of employers
say AI skills are
now essential

**1
year**

Apprenticeship
Software
Developer

59,572

New jobs are
forecasted by
2028

£35k

Employment
Cyber Security
Analyst

**£5
billion**


Is the value of
the digital
sector in
Greater
Manchester

#ICanBe

Computing Teacher
Web Developer
IT Technician
Cyber Engineer



Tameside
College



100%
of computing
learners achieved
the top grades of
distinction or
distinction
star

Computing Courses

FOR ENTRY QUALIFICATIONS SEE PAGE 10

COMPUTING



Duration • 1 year | Campus • Tameside One

This course is aimed at those who wish to develop their skills in IT and computing. You will learn how computers work and how they are used in businesses. You will gain knowledge in IT fundamentals, using the internet, use of email, website software and spreadsheets, all of which will help you progress to a higher level course.

ESPORTS



Duration • L2 1 year / L3 2 years | Campus • Tameside One

Esports is one of the fastest growing digital industries in the world. This unique course will help you understand this growth industry, equipping you with vital skills required to further your Esports career.

On this course, you will complete units that will develop your understanding of the following topics: Esports skills, strategies and analysis, enterprise and entrepreneurship, events and laws and legislations.

You will gain a firm grasp of the business elements, including live-streamed broadcasting, games design and more.

.....

Computing Courses

FOR ENTRY QUALIFICATIONS SEE PAGE 10

T LEVEL: DIGITAL

Duration • 2 years | Campus • Tameside One

The T Level in Digital qualification covers a variety of concepts such as data, security and programming, software development life cycle, software solution methodologies and the impact of emerging technologies. You will also complete a substantial 45 days work placement which involves working in a digital role, where you will also be supported to complete an employer set project.

FACTS

CONSTRUCTION INDUSTRY



**£14.1
billion**

In new construction projects forecast in Greater Manchester over the next 5 years

Progression | Salary

**2
years**

University Degree
Construction
Management

40%

Of the workforce is self-employed

**2
years**

Apprenticeship
Painter and
Decorator

79,000

People employed in the construction industry in Greater Manchester

£35k

Employment
Plumber

10,000

New jobs in Greater Manchester by the end of 2025

#ICanBe

Carpenter
Electrician
Bricklayer
Plumber



Tameside
College

#ICan

**STUDENT
OF THE
YEAR**

Tameside
College



**CARPENTRY
AND JOINERY**

.....
**Careena
Ditchfield**

GREAT ACADEMY ASHTON



**I love the workshops, they are such
great facilities.**



PROGRESSION

Level 3 Carpentry

#ICanBe



**Tameside
College**



www.tameside.ac.uk
0161 908 6789



Construction Courses

FOR ENTRY QUALIFICATIONS SEE PAGE 10

SITE CARPENTRY

L2 L3

Duration • 1 year | Campus • Beaufort Road

You will develop and advance your skills in carpentry. You will focus on the installation of joinery products such as doors and windows as well as learning the basic principles of roofing. You will also learn how to finish building works with decorative finishes. Upon completion of carpentry you will be able to fix roofing, stairs, doors and use machinery correctly.

ARCHITECTUAL JOINERY

L2

Duration • 1 year | Campus • Beaufort Road

Joinery is an exciting and challenging career path and whilst studying it you will cover; the principles of construction, planning and preparation for architectural joinery products, safe use of different types of woodwork machinery including fixed and transportable, creating joinery products, assembly and the finishing of joinery products.

The course will also combine core skills such as communication, organisation, planning as well as practical skills.

.....



CARPENTRY AND JOINERY

L1

Duration ● 1 year | **Campus** ● Beaufort Road

This course has been designed to develop your skills, knowledge and understanding of carpentry and joinery to enable you to progress to the next level. The course focuses on woodwork and includes topics such as an introduction into the industry, estimating, health, safety and welfare and knowledge of construction technology.

CONSTRUCTION MULTISKILLS

L1

Duration ● 1 year | **Campus** ● Beaufort Road

You will learn the skill of carpentry and joinery, painting and decorating and bricklaying, all at the basic level. This will enable you to progress onto the higher level, which is relevant to what you enjoyed doing during this qualification.

FURNITURE, FURNISHINGS AND INTERIORS

L2

Duration ● 1 year | **Campus** ● Beaufort Road

This course is the first step to gaining a qualification in the kitchen, bedrooms and fitting and manufacturing industry, specifically in the role of kitchen fitter. During the course you will cover topics in; health and safety in furniture, furnishings and interiors, workplace responsibilities in furniture, furnishings and interiors and plan career progression in the furniture, furnishings or interiors industries. You will also learn to fit skilled doors and drawers and use power tools for measuring and assembling.

ELECTRICAL

L1

L2

L3

Duration ● 1 year | **Campus** ● Beaufort Road

These courses have been designed to help those interested in the electrical industry to progress. You will learn electrical principles, electrical science, electrical technology, inspection and testing, as well as the latest wiring regulations. During the course you will get hands on in our purpose built workshops.

PLUMBING



Duration • 1 year | Campus • Beaufort Road

You will learn all the basic skills to become a plumber. Following on from this, the higher level courses will teach you about heating systems, hot and cold water systems, sanitation systems, environmental technologies and gas safety. You will use all the latest tools to support your studies and progression.

BRICKWORK



Duration • 1 year | Campus • Beaufort Road

You will be taught practical skills to succeed within the bricklaying industry. Skills will include repair and maintain structures, scaffolding, solid and cavity walls and fireplaces and chimneys. You will learn building standards and how the industry operates.

PAINTING AND DECORATING



Duration • 1 year | Campus • Beaufort Road

Become a painter and decorator with this exciting course. You will learn all the skills required to be successful in this competitive industry. Gain an understanding of the skills required for both domestic and commercial projects. You will learn how to prepare surfaces, the use of different tools, interior and exterior painting and decorating and bespoke projects.

FURNITURE, FURNISHINGS AND INTERIORS



Duration • 1 year | Campus • Beaufort Road

This course is the first step to gaining a qualification in the kitchen, bedrooms and fitting and manufacturing industry, specifically in the role of kitchen fitter. During the course you will cover topics in; health and safety in furniture, furnishings and interiors, workplace responsibilities in furniture, furnishings and interiors and plan career progression in the furniture, furnishings or interiors industries. You will also learn to fit skilled doors and drawers and use power tools for measuring and assembling.

FACTS

ENGINEERING INDUSTRY



115,000

People are employed in the Engineering and Manufacturing sector

Progression | Salary

**4
years**

University Degree
Electrical &
Electronic
Engineering

**4
years**

Advanced
Apprenticeship
Engineering
Technician

£46k

Employment
Mechanical
Engineer

15.7%

Of the
Engineering
workforce are
women

1.8%

Growth in
Engineering
productivity

**£690
billion**

Engineering
contributes to
the UK economy
in 2025

#ICanBe

Robotics Engineer
Service Engineer
Production Engineer
Civil Engineer



Tameside
College



**STUDENT
OF THE
YEAR**

ENGINEERING

**Grace
Pearson**

MOSSLEY HOLLINS HIGH SCHOOL

“ The college is great. So welcoming and everyone is friendly. ”

PROGRESSION

Engineering apprenticeship
at Hyde Group Manchester
Precision Engineering

#ICanBe



**Tameside
College**



www.tameside.ac.uk
0161 908 6789



Engineering Courses

FOR ENTRY QUALIFICATIONS SEE PAGE 10

ENGINEERING

L3

Duration • 2 years | Campus • Beaufort Road

Develop engineering knowledge and skills through a range of topics including: health and safety, electrical and electronic principles, robotics, CNC machining, programmable logic control, microcontrollers and CAD. You can progress to university or into employment. The qualification is equivalent to 3 A Levels.

ENGINEERING PRE-APPRENTICESHIP

L2

Duration • 1 year | Campus • Beaufort Road

You will cover a range of engineering subjects including health and safety, principles of engineering and develop a good range of hand and machining skills which will prepare you for an apprenticeship in engineering. You will be prepared for an sent to interviews with local employers during your course to process to an apprenticeship.

ENGINEERING MECHANICAL

L3

Duration • 1 year | Campus • Beaufort Road

This course is designed to enable students to develop their practical skills and knowledge in a mechanical and manufacturing engineering environment through a range of challenging units.

The course covers the following units: health & safety, engineering principles, principles of mechanical manufacturing engineering, computer aided draughting, CNC machining of materials and detailed fitting of materials.



FOOD AND BAKERY INDUSTRY



FACTS

86,000

People employed
in the hospitality
sector in GM

Progression | Salary

3
years

University Degree
Hospitality
Business
Management

Over
1/2

Of bakery
businesses have
fewer than 10
employees

1
year

Apprenticeship
Baker

2nd

Largest city for
hospitality is
Greater
Manchester

£23k

Employment
Food &
Beverage
Assistant

27%

Rise in specialist
bakeries in
Greater
Manchester
since 2010

#ICanBe

Restaurant Manager
Baker
Chef
Waiter



Tameside
College

#ICanBe

**STUDENT
OF THE
YEAR**

FOOD

**Amelia
Meehan**

ST THOMAS MORE RC COLLEGE

“

The opportunities of work experience and competitions have been great to be involved in.

”

PROGRESSION

Joining the navy as a chef

#ICanBe



Tameside
College



www.tameside.ac.uk
0161 908 6789



Food Studies and Bakery Courses

FOR ENTRY QUALIFICATIONS SEE PAGE 10

PROFESSIONAL COOKERY

Duration • 1 year | Campus • Tameside One



Are you a keen cook and want to expand your knowledge and skills? These qualifications will teach you the skill of cookery, from processes to the best produce. You will also learn food safety, hygiene and menu design. You will get hands on and cook in our industry standard kitchens. At level 3 you will be expected to run the kitchen. The hospitality industry is seeing rapid growth and front of house skills are also developed on these courses.

PROFESSIONAL BAKERY

Duration • 1 year | Campus • Tameside One



You will learn all aspects of bakery with these courses whilst developing good bakery practices and understanding. You will make bread, confectionery and patisserie using a variety of methods and processes which will be to industry standard.

HOSPITALITY

Duration • 1 year | Campus • Tameside One



The course includes units within the catering and hospitality industry and comprises of basic cookery sessions both practical and theoretical knowledge. You will gain valuable practical experience working in the restaurant at Tameside One, whilst developing your knowledge and skills within the kitchens using a variety of ingredient, styles, cuisines and methods of cookery, as well as building those key employability and industry skills and qualification portfolio.

FOOD AND BEVERAGE SERVICE

Duration • 1 year | Campus • Tameside One



You will learn all aspects of supervising a food and beverage service, with sessions both practical and theoretical. During the course you will; get to visit international and local restaurants and catering establishments, take part in live demonstrations and competitions, and gain valuable practical experience working in The Restaurant at Tameside One.

This course has been designed to give both practical hands on skills and an understanding of the catering industry with food safety and health and safety for the catering industry.



HAIR AND BEAUTY INDUSTRY



FACTS

46%

Of salons and barbers made a profit in 2023

Progression | Salary

**3
years**

University Degree
Special Effects
Makeup Artistry

£1,000

Per month is the average spend on hair and beauty treatments

**2
years**

Apprenticeship
Barbering

60.5%

Of professionals in the sector are self-employed

£30k

Employment
Hair Stylist

86%

Of the workforce in hairdressing, barbering and beauty are female

#ICanBe

Hair Stylist
Beauty Therapist
Barber
Makeup Artist



Tameside
College

Tameside
College

**STUDENT
OF THE
YEAR**

**BEAUTY
THERAPY**

.....
**Taylor
Elliott**

FAIRFIELD HIGH SCHOOL FOR GIRLS

“

My teachers have been very supportive throughout my studies. I am looking forward to working full-time in the salon.

”

PROGRESSION

**Employed at a salon, Body
Contour in Dukinfield**

#ICanBe



Tameside
College



www.tameside.ac.uk
0161 908 6789



Hair and Beauty Courses

FOR ENTRY QUALIFICATIONS SEE PAGE 10

HAIRDRESSING

Duration • 1 year | Campus • Tameside One



These courses will ensure you understand the basic aspects of the hairdressing industry. You will learn to cut hair, colour hair, style hair, creatively dress hair, promote products and services, provide colour correction services as well as maintain health and safety and client care. You will work in our purpose built salons during your studies, to develop industry experience, progressing through each level to develop your skills.

HAIR AND BEAUTY

Duration • 1 year | Campus • Tameside One



During this hair and beauty course you will find out about the hair and beauty industry. You will contribute to salon-related tasks, looking after customers, carrying out a treatment, demonstrating Nail Art, demonstrating make-up techniques and demonstrating hair styling.

BEAUTY THERAPY

Duration • 1 year | Campus • Tameside One



These courses will provide you with the basic skills required in the beauty industry.

As well as client care and health and safety, you will learn: manicures, pedicures, waxing, facial treatments, lash and brow, and makeup.

You can develop your skills in body massage, body and facial electrical, microdermabrasion, indian head massage and stone therapy at Level 3.

You will also provide customer services in our commercial salon sessions.

.....

Hair and Beauty Courses

FOR ENTRY QUALIFICATIONS SEE PAGE 10

HAIR AND MEDIA MAKEUP

L2 **L3**

Duration ● 1 year | **Campus** ● Tameside One

This course will provide you with the technical skills required to specialise in hair and makeup.

You will cover a range of topics from: health and safety practices, working in beauty related industries, applying makeup, creative hair styling, photographic makeup and more.

BARBERING

L2 **L3**

Duration ● 1 year | **Campus** ● Tameside One

Level 2 barbering will cover units on; principles of practice of hairdressing, shampoo, condition and treat the hair and scalp, cut men's hair using basic techniques, cut facial hair to shape using basic techniques, dry and finish men's hair and create basic outlines and detailing in hair. Following this, level 3 will allow you to further your skills in cutting hair using a combination of barbering techniques, design and create facial hair shapes, shaving services and barbering consultation services.

NAIL TECHNOLOGY

L2

Duration ● 1 year | **Campus** ● Tameside One

During the nail technology course you will learn how to reduce risks within health and safety, promote products and services to customers, develop effective working practices, provide manicure and pedicure services, how to do nail art with a range of industry standard tools and techniques as well as applying and maintaining nail enhancements such as acrylic and gel nails.

FACTS

HEALTH, SOCIAL CARE AND EARLY YEARS INDUSTRY



No.1

**Largest
employment
sector in GM**

Progression | Salary

**3
years**

**University Degree
Health and
Social Care**

**1
year**

**Apprenticeship
Early Years
Practitioner**

£35k

**Employment
Social
Worker**

23%

**Sector
growth
by 2040**

131

**Registered
childminders
in Greater
Manchester**

909

**Primary schools
in Greater
Manchester**

#ICanBe

**Childminder
Counsellor
Care Worker
Nurse**



**Tameside
College**



**STUDENT
OF THE
YEAR**

**HEALTH AND
SOCIAL CARE**

**Riley
McConnell**

DROYLSDEN ACADEMY

“ My tutors challenge me in a way to progress further, allowing me to develop professional skills and knowledge to support and aid me towards my future career. ”

PROGRESSION

**Social Work at
Salford University**

#ICanBe



**Tameside
College**



www.tameside.ac.uk
0161 908 6789



Health, Social Care and Early Years Courses

FOR ENTRY QUALIFICATIONS SEE PAGE 10

L1

CARING FOR CHILDREN

Duration • 1 year | Campus • Beaufort Road

If you are interested in making a difference to children and young people's lives with a rewarding career in Early Years, then this is the course for you. You could be looking to work with babies, young children or children with learning disabilities, this qualification could be the first step on that exciting journey. Early Years courses provide broad based learning around the physical, intellectual, emotional and social needs of babies and children of all ages preparing you for a variety of career pathways with the sector. This practical and academic qualification will give you the knowledge and skills to move forward towards your goal.

EARLY YEARS

Duration • 1 year | Campus • Beaufort Road

L2

During the course you will prepare for working with children up to the age of five. You will learn to support physical care routines, safeguarding and legislations, equality and diversity and supporting play and development. The knowledge and skills you learn will enable you to progress to a higher level qualification.

T LEVEL: EARLY YEARS

Duration • 2 years | Campus • Beaufort Road

All students will develop an understanding of: the education and early years sector from ages 0 to 19, child development, how to support children and young people's education safeguarding, health and safety and wellbeing, understanding and managing behaviour, observing and assessing children and young people, equality and diversity, special educational needs and disability, English as an additional language, working with parents, carers and wider families, working with agencies and services that support children and other forms of professional development.

Health, Social Care and Early Years Courses

FOR ENTRY QUALIFICATIONS SEE PAGE 10

T LEVEL: MIDWIFERY

Duration • 2 years | Campus • Beaufort Road

If you are passionate about making a real difference in people's lives and want a rewarding career in healthcare, enrolling on the T Level in Midwifery is an excellent step forward. The course offers a unique blend of classroom learning and hands-on industry placement, giving you the skills, knowledge and confidence to support women and families through one of life's most important journeys. With a strong focus on both academic study and practical experience, you will be well prepared to progress into higher education, and apprenticeship or directly into a healthcare career. By choosing this pathway you'll not only be shaping your own future but also making a lasting impact on the lives of others.

HEALTH AND SOCIAL CARE

Duration • 1 year | Campus • Beaufort Road

L1

During this course you will acquire knowledge and skills which relate to the health and social care sector. This course will prepare you for an exciting and challenging career. You will learn topics such as; the range of service provision and roles, principles and values, safeguarding, health and safety, human growth & development and equality and inclusion.

HEALTH AND SOCIAL CARE

Duration • 1 year L2, 2 years L3 | Campus • Beaufort Road

L2 L3

These courses aim to help you progress your skills and knowledge to support you in your future career. You will learn to develop your communication skills whilst learning about equality and diversity, rights in the sector, health and safety, health and social care values, human life span development, healthy living and therapeutic activities. You will be well prepared for university, to continue your studies to degree level or onto a higher level apprenticeship.

Health, Social Care and Early Years Courses

FOR ENTRY QUALIFICATIONS SEE PAGE 10

T LEVEL: HEALTH

Duration • 2 years | Campus • Beaufort Road

During this T Level qualification students will develop a general understanding of health and science; looking at principles of good scientific and clinical practice, how to manage data, environmental regulations and science concepts (cells, tissues, microbiology). In addition to this, students will also learn about topics specific to health; such as wellbeing, anatomy, physiology and infection prevention.

T LEVEL: NURSING

Duration • 2 years | Campus • Beaufort Road

Students will develop a general understanding of health and science. You will learn about topics specific to health, including: understanding the healthcare sector; providing person-centred care, supporting health and wellbeing; further knowledge of both human anatomy and physiology and of diseases and disorders as well as infection prevention and control.



A healthcare student, wearing a black hoodie, a grey apron, a blue surgical mask, and a lanyard with an ID badge, is attending to a medical mannequin lying in a hospital bed. The mannequin is wearing a white t-shirt, dark shorts, and a neck brace. The student is wearing blue gloves and is focused on the mannequin's arm. The background shows a clinical setting with blue curtains, a hand sanitizer dispenser, and other medical equipment.

T Level
health
100%
high
grades

FACTS

PUBLIC SERVIVES INDUSTRY



Progression | Salary

**3
years**

University Degree
Policing and
Criminal
Investigation

**3
years**

Apprenticeship
Police Constable

£27k

Employment
Trainee
Firefighter

1/3

Of Greater
Manchester's
workforce is
employed in the
public sector

2,000

Employees of
GMFRS including
firefighters,
control room
operators and
support staff

13,294

Team members
in GMP

16,300

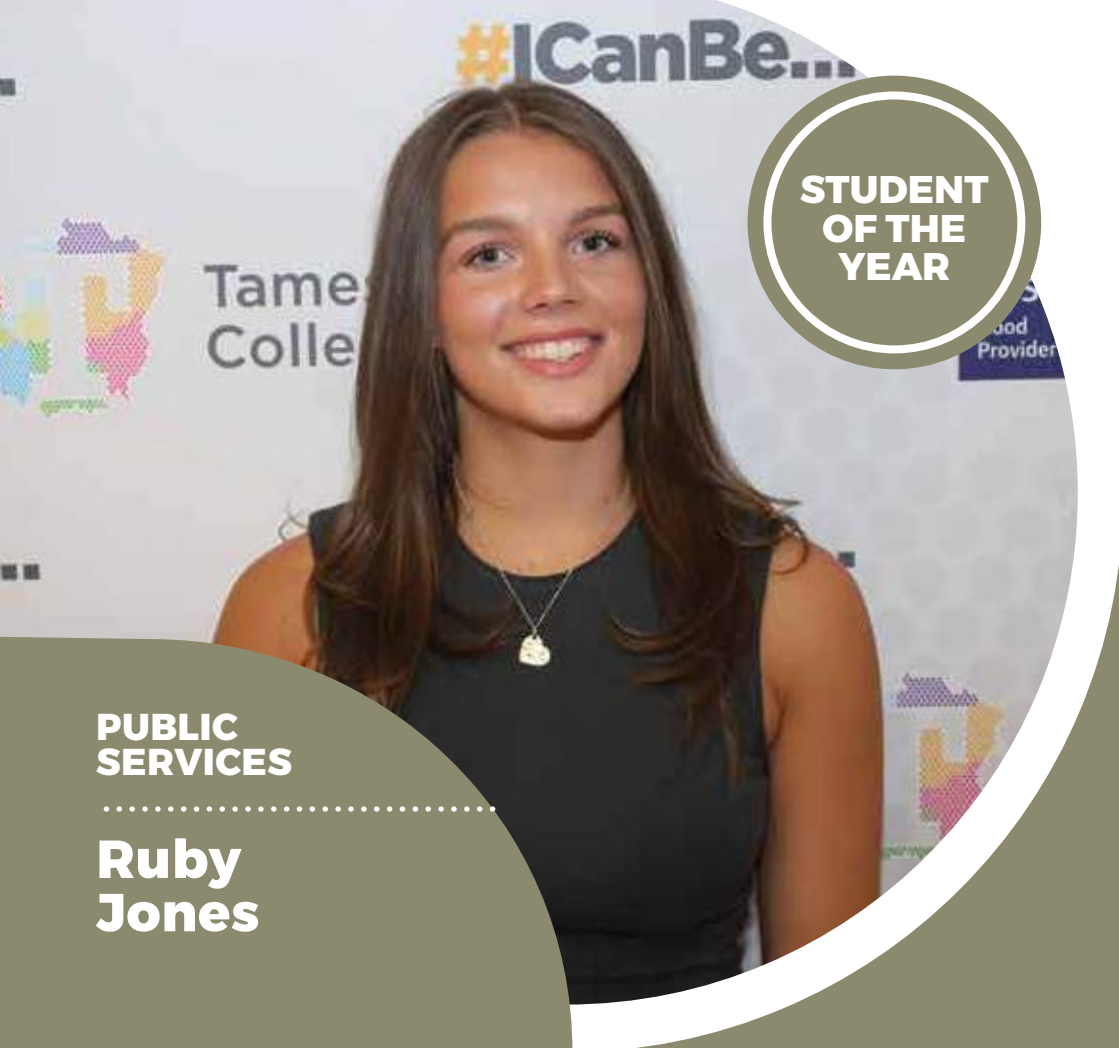
Females are
employed
in the British
Armed Forces

#ICanBe

Army Officer
Police Officer
RAF Officer
Firefighter



Tameside
College



**STUDENT
OF THE
YEAR**

**PUBLIC
SERVICES**

.....
**Ruby
Jones**

RAYNER STEPHENS

“ I am looking forward to going to camp America over the summer and then starting my career as a firefighter. ”

PROGRESSION

Become a firefighter

#ICanBe



**Tameside
College**



www.tameside.ac.uk
0161 908 6789



Public Services Courses

FOR ENTRY QUALIFICATIONS SEE PAGE 10

PUBLIC SERVICES

L1

Duration • 1 year | Campus • Beaufort Road

During our public services courses you will learn the basics of a career in the public service sector. You will then progress to learn more varied skills and improve your knowledge including leadership and teamwork, physical preparation, health and lifestyle, human rights, police powers and public behaviours. Experience the outdoors with our range of activities and trips.

PUBLIC SERVICES

L2

L3

Duration • 1 year L2 and 2 years L3 | Campus • Beaufort Road

This course presents an opportunity for you to gain an understanding of the public services sector and to investigate career opportunities in the sector. You will gain an understanding of the personal commitment and fitness requirements needed to be employed in a uniformed service role, an understanding of how uniformed services organisations respond in emergency situations, and the opportunity to understand and develop the skills and qualities needed to work in a range of public services. This course will be taught in a largely practical environment with an opportunity to develop skills in leadership, self-awareness, communication, planning, teamwork, confidence and decision making. The curriculum incorporates student visits and guest speakers including; the British Army, the RAF, Royal Navy & Royal Marines, North West Ambulance Service, Greater Manchester Fire & Rescue Service and Greater Manchester Police.

POLICING

L3

Duration • 2 years | Campus • Beaufort Road

The course is designed to help develop the skills and qualities you would need to work in the UK Police Forces. You will experience a range of activities including classroom based learning, physical fitness training, outdoor and adventurous activities and a comprehensive work experience programme with a range of Uniformed Service organisations.

Throughout the course you will study a range of topics including investigating employment, physical fitness, leadership, conflict management, crime scene investigation, map reading and navigation as well as the UK legal system and the Police Service.

.....



100%
of policing and
90% of public
services students
gained the highest
grades of distinction
and distinction
star

FACTS

SPORTS INDUSTRY



62.1%

Of adults
are physically
active

Progression | Salary

**3
years**

University Degree
Sport Coaching
and Development

24

Major sporting
events took
place in
Manchester
in 2024

**18
months**

Apprenticeship
Sports Coach

140,000

Activity
and sports
bookings
annually

£27k

Employment
PE Teacher

**3.5
million**

Visits to sports
and leisure
facilities in
2024

#ICanBe

**Fitness Coach
Personal Trainer
Sports Teacher
Sport Therapist**



Tameside
College

**STUDENT
OF THE
YEAR**

**Tameside
College**

Ofsted
Good
Provider

SPORTS

**Ben
Burgoyne**

WRIGHT ROBINSON COLLEGE

“

I chose to go to Tameside College because I heard a lot of good things about the college.

”

PROGRESSION

**Sports Coaching at
University Academy 92**

#ICanBe



**Tameside
College**



www.tameside.ac.uk
0161 908 6789



Sports Courses

FOR ENTRY QUALIFICATIONS SEE PAGE 10

SPORT

Duration • 1 year L1 and L2 | Campus • Beaufort Road



You will start with the basic knowledge of sports and fitness, progressing to further your skills in fitness and training, sports leadership, sports psychology and performance and gym instructing. You will learn the health and safety of sports and injury management.

SPORT SCIENCE

Duration • 2 years | Campus • Beaufort Road

L3

Over two years, you will study 18 in-depth units that develop your understanding of the human body, athletic performance, and the science behind sport. Through engaging, hands-on learning, you will explore topics such as anatomy, physiology, sports injuries, and sport psychology. You will gain the ability to assess performance, understand physical responses to training, and examine the mental factors that influence sporting success. The course combines academic and practical assessment methods, including written assignments, presentations, scientific investigations, and group tasks.

SPORT COACHING

Duration • 2 years | Campus • Beaufort Road

L3

You'll work with modern performance analysis technology, gain experience in designing training programmes, and develop a strong grasp of the sport and physical activity industry. Assessment is varied and engaging, including practical delivery of coaching sessions, written coursework, presentations and collaborative group tasks. Units covered include: anatomy and physiology; fitness training; sports coaching; performance analysis and practical sport.



TRAVEL AND TOURISM INDUSTRY



FACTS

102,500

Full time
tourism jobs
in GM

Progression | Salary

3
years

University Degree
International
Tourism
Management

90,000

Jobs across GM
through direct,
indirect, and
induced
employment

1
year

Apprenticeship
Travel
Consultant

100

Airlines fly to
and from
Manchester

£25k

Employment
Travel Agent

196,091


Flights from
Manchester
in 2024

#ICanBe

Flight Assistant
Hotel Manager
Resort Representative
Travel Agent



Tameside
College



**STUDENT
OF THE
YEAR**

**TRAVEL AND
TOURISM**

.....
**Billy
Cooper**

SADDLEWORTH SCHOOL

“

**I aspire to become a commercial airline pilot
in the future.**

”

PROGRESSION

**Airline and Airport
Management at Sheffield
Hallam University**

#ICanBe



**Tameside
College**



**www.tameside.ac.uk
0161 908 6789**



Travel and Tourism Courses

FOR ENTRY QUALIFICATIONS SEE PAGE 10

TRAVEL AND TOURISM

L1 L2

Duration • 1 year | Campus • Tameside One

This course will allow you to cover a variety of functions within the travel and tourism industry. It will be the building block to progress to a higher level course upon completion. You will study a range of topics including UK travel and tourism, packaged products and services and local geography.

TRAVEL, TOURISM AND AVIATION

L3

Duration • 2 years | Campus • Tameside One

During this course you will further develop your skills and knowledge of the travel and tourism industry. You will learn skills that will help you progress in your career. Topics will include customer service, travel destinations, promotional activities, retail travel services and holiday and travel planning. This course provides dynamic career opportunities within a growing global industry. It will develop valuable, transferable skills.

.....



Supported Internship



Supported internships are a structured study programme based primarily at an employer. The programme will equip you with the skills needed for work, through learning in the workplace. Supported internships are unpaid and last for an academic year.

WHO IS IT FOR?

The full time study programme allows young people aged 16-24 with an Education, Health and Care plan to achieve sustainable paid employment.

LEARNING METHOD

You will learn through a variety of teaching methods which will aim to meet the needs of each individual and accommodate different learning styles. You will:

- Learn effective communication
- Prepare for and attend an interview
- Work as part of a team
- Gain knowledge of alternatives to paid employment
- Undertake a work placement
- Searching for a job
- Learn personal presentation and hygiene
- Gain skills, qualities and attributes needed for learning and work
- Be involved in community projects

Alongside your time at the employer you will complete a personalised study programme which includes the chance to study for relevant qualifications, if appropriate, and English and maths.

PROGRESSION

Wherever possible, we support the young person to move into paid employment at the end of the programme.

PARTNERSHIP

The Internship is run in partnership with Tameside College and Active Tameside. Whilst on the programme we aim to provide three placements which last approximately 3 months each.



Aspirations

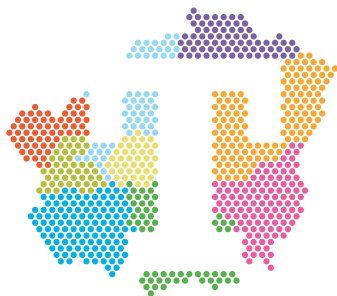


Aspirations students work towards the skills they need to participate in the wider community and where appropriate, the world of work. Aspirations learners often have specific learning needs and may have an EHCP (Education, Health and Care Plan). They may have attended a special school for their 11-16 education.

Aspirations support learners with a wide range of abilities with a personalised and flexible programme of study. Learners work towards externally recognised qualifications from City & Guilds, BTEC and NCFE from Entry Level 1 to Level 1. Learners will work towards improving communication and number skills and may complete maths, English and IT functional skills qualification, at an appropriate level.

Each learner at Aspirations will have an individual learning plan to assist them to develop the skills needed for adulthood and independence or supported employment. All learners have a personal, flexible, learner centred timetable selected from a matrix of subjects with consideration of their personal interests. Students can access one of many individualised curriculum pathways.

Entry level 1 to Level 1 sessions incorporate and embed literacy and numeracy and can include: digital skills, horticulture, drama, art, communication, sport, independent living skills, community participation, work experience and work skills, enterprise, environmental skills, personal and social development, British values, yoga and mindfulness, personal safety skills, including online safety.



**STUDENT
OF THE
YEAR**

Tameside
College

Ofsted
Good
Provider

SPRINGBOARD

**Liandra
Jeriwa**

“

The teachers at college are supportive
of me and they make lessons interactive
and fun.

”

PROGRESSION

Level 1 vocational

#ICanBe



Tameside
College



www.tameside.ac.uk
0161 908 6789



Springboard

For 16 to 18 Year Olds



Springboard is a tailored provision designed to support young people who may not yet hold GCSE qualifications or who have been educated in alternative settings, such as home education or alternative provision. The course is structured across three terms, with a gradual increase in college-based learning hours to support a steady and manageable transition into education.

TERM 1 -

6 hours per week in college

TERM 2 -

8 hours per week in college

TERM 3 -

10 hours per week in college

Throughout all three terms, students will work towards achieving qualifications in Functional Skills Maths and English. Additionally, each learner will receive dedicated support through a 1-hour weekly tutorial with a Progress Tutor, focusing on personal development, wellbeing, and future planning.

TERM 1 -

Focus on developing essential soft skills such as:

- Confidence building
- Communication skills
- Personal and social development
- Life skills (e.g., time management & self-organisation)

TERM 2 & 3:

Work towards an **Entry Level 3 Employability qualification**, while continuing to enhance their soft skills. Areas of development may include:

- Teamwork and collaboration
- Problem-solving and critical thinking
- Interview preparation and CV writing
- Digital literacy and safe online behaviour
- Decision making and goal setting
- Resilience and coping strategies



Springboard

For 16 to 18 Year Olds



Enrichment & Life Skills Development

As well as classroom-based learning, Springboard includes real-life experiences that help young people develop independence, social confidence, and practical skills for everyday life:

- Team building at the boating lake
- Eating out in a restaurant
- Shopping on a budget
- Cooking and healthy eating workshops
- Wellbeing and mindfulness activities

A Gentle Reintroduction to Education

With a phased timetable, students can gradually build confidence and routine in a supportive environment.

Focused Support with Maths & English

Gain essential Functional Skills qualifications that are stepping stones to further study, or employment.

Tailored Personal Development

Build key soft skills like communication, teamwork, resilience, and confidence – vital for everyday life and work readiness.

Progression:

Level 1 vocational course

For students with an EHCP a Supported Internship
Employment (Entry level roles or volunteering)



ESOL Courses

For 16 to 18 Year Olds

This course is designed to support school and college leavers whose second language is English. As well as providing intensive English Language teaching, learners can take the first steps towards living independently within the community.

LEARNING ENGLISH

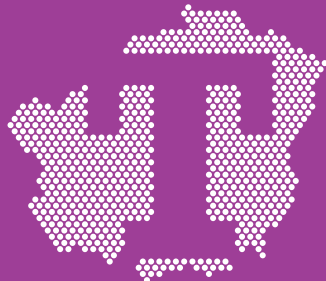
The English for speakers of other languages course consists of the following key elements: reading, speaking, listening and writing. Students will learn practical skills for employment such as writing letters, completing forms and creating a CV. The qualifications, awarded by City and Guilds, are recognised by employers and education providers. During the programme students are given the opportunity to study maths and digital skills in addition to the English skills.

CAREERS AND PROGRESSION

All Tameside College students have access to the range of career related courses. Students starting the ESOL programme can progress into employment and further education including university. Most students will spend 2 to 3 years studying to improve their English and communication skills.

ENRICHMENT AND SUPPORT

ESOL students take part in the full range of enrichment and have access to the college gym, which are effective ways to make new friends and keep fit. They also have access to support across college including: careers guidance, work experience, learning and financial support.





We welcome people from all sections of the community.

In all aspects of college life we value diversity.

**FOLLOW
CALL
VISIT
LIKE**

TAMESIDE COLLEGE

**Beaufort Road
Ashton-under-Lyne
OL6 6NX**

TAMESIDE ONE

**Wellington Road
Ashton-under-Lyne
OL6 6BL**

0161 908 6600

www.tameside.ac.uk

www.twitter.com/tamesidecollege

www.facebook.com/tamesidecollege

#ICanBe



**Tameside
College**

