

**ABOUT TAMESIDE COLLEGE**

**APPRENTICES**

**APPLICANTS**



# APPRENTICESHIPS AT TAMESIDE COLLEGE



## APPRENTICESHIPS

Apprenticeships are a great way to combine working with learning new skills and qualifications for your career. Apprenticeships are becoming increasingly popular as employers recognise the value of training staff to professional standards. It is a great way to start your career and an opportunity to develop broader skills

## AS AN APPRENTICE YOU WILL:

- Work alongside experienced staff
- Learn job specific skills
- Study a recognised qualification
- Have time to study one day a week at college
- Earn a wage and get holiday pay

## JAKE HOROSZCZAK

Advanced Apprentice  
Brickwork

Employed at Seddon  
Construction



# APPRENTICESHIPS IN GROWTH SECTORS

WE OFFER APPRENTICES IN ALL OF THEM.

### Health & social care

Health & Social Care  
Childcare  
Dental Nursing  
Care Management  
Lab Technician

### Motor vehicle & logistics

Warehousing & Storage  
Motor Vehicle

### Food and hospitality

Butchery  
Bakery  
Catering

### Engineering & manufacturing

Business Improvement  
Techniques  
Electrical  
Engineering

### Construction

Painting & Decorating  
Plumbing  
Bricklaying  
Joinery

### Hair and beauty

Beauty Therapy  
Hairdressing

### Business, computing & finance

ICT  
Business Administration  
Customer Service  
Accounting  
Management

### Education

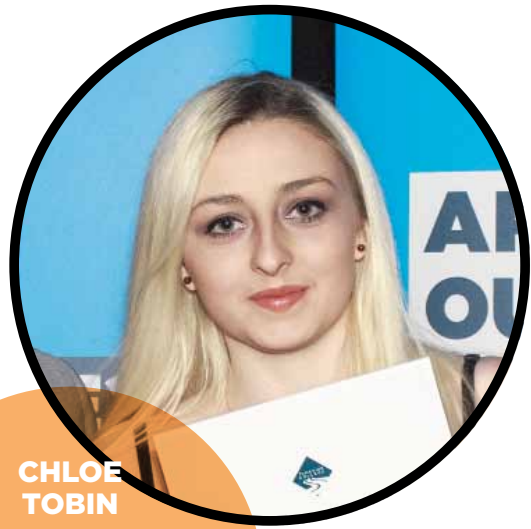
Teaching Assistants

### Sports and leisure

Sports & Fitness

## LEVELS OF APPRENTICESHIP

Apprenticeships, like college courses, have different levels which can be matched to your exam grades from school. The levels offer you pathway to progress. This means you can gain higher level qualifications that employers need staff to have to develop and lead organisations.



**CHLOE  
TOBIN**

Intermediate Apprentice  
Teaching Assistant

Employed at  
Cromwell High School




## LEVELS OF APPRENTICESHIP

	LEVEL	EQUIVALENT EDUCATION LEVEL
Intermediate	2	GCSE
Advanced	3	A-level
Higher	4,5,6,7	Foundation degree and above
Degree	6 and 7	Bachelor's and master's degree

## #IcanBe . . .

Engineer	Dental Nurse	Nursery Teacher
Teaching Assistant	Health Care Assistant	Motor Mechanic





**All apprenticeships include elements of on the job training leading to industry standards or qualifications. Some apprenticeships also require an assessment at the end of the programme to assess the apprentice's ability and competence in the job role.**

Off the job training at college is normally one day a week. The apprentice will study theoretical and practical skills to support their learning in the workplace.

Apprentices will also study maths and English up to GCSE grade C (or equivalent) level.

## APPLICATION PROCEDURE

There are a number of ways that you can apply for or enquire about an apprenticeship:

- Complete an online application form on Tameside College website
- Apply directly for Apprenticeship vacancies that you're interested in on the Tameside College website
- Enquire via Tameside College website
- Apply at an open event or a visit to school

## WHAT HAPPENS NEXT?

When we receive your application we will invite you for interview and a skills test.

As part of the interview we are keen to find out more about your career ideas and what you would like to achieve. The skills test helps assess your academic ability and specific skills such as maths and English.



## YOHANNES SOLOMON

Apprentice Motor  
Mechanic

Employed at  
Car Sales Manchester Ltd



**PREPARING FOR AN INTERVIEW** Our recruitment team will also match you to vacancies that you might be interested in.

To support your application for specific vacancies we will help you update your CV.

We will also offer mock interviews to prepare you for questions an employer might ask you about their apprenticeship vacancy. It is also a good idea to think about questions you might want to ask the employer about the apprenticeship.

When you have successfully gained an Apprenticeship offer from an employer we will make arrangements for you to start.

## #ICanBe . . .

Plumber	Warehouse Manager	Beauty Therapist
Chef	Hospitality Manager	Butcher

**CALL  
VISIT  
FOLLOW  
LIKE**

-----  
0161 908 6789

[www.tameside.ac.uk](http://www.tameside.ac.uk)

[www.twitter.com/tamesidecollege](http://www.twitter.com/tamesidecollege)

[www.facebook.com/tamesidecollege](http://www.facebook.com/tamesidecollege)  
-----

Contact the Apprenticeship Business  
Development Team

**0161 908 6603 / 5706 / 6630**  
-----

**Tameside Centre for Enterprise**

Old St,

Ashton-under-Lyne

OL6 7SF



We welcome people from all sections of the community.  
In all aspects of college life we value diversity.